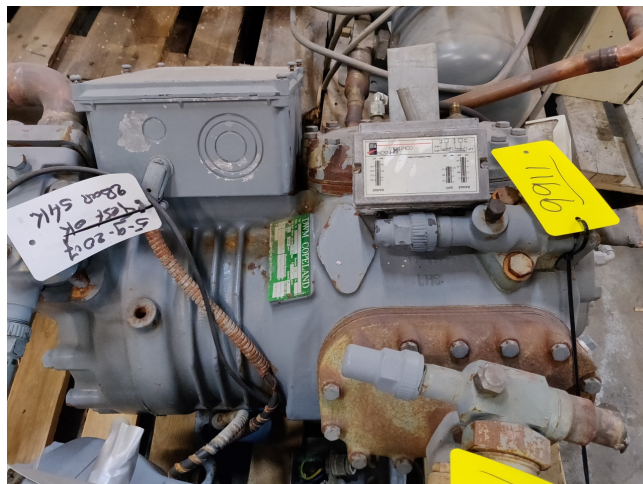


DWM D4DA1 2000 EWM

Specifications

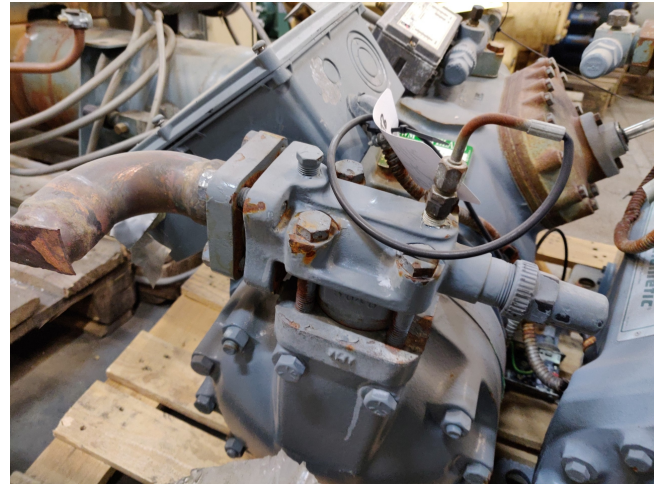
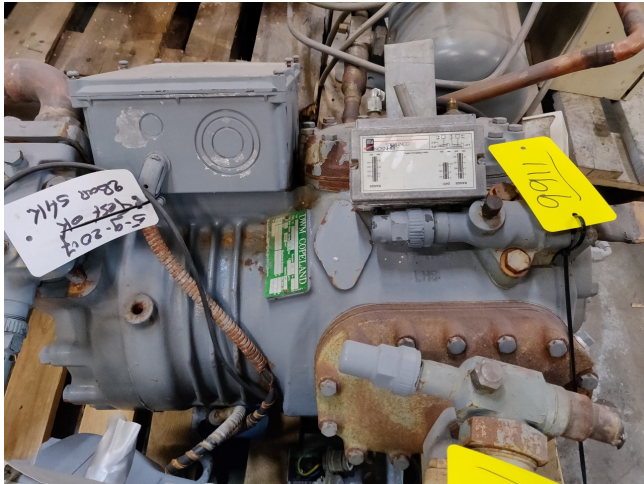
Brand	DWM
Type	D4DA1 2000 EWM
Refrigerant	Freon
kW at +10°C/+40°C	65.99
kW at 0°C/+40°C	46.24
kW at -5°C/+40°C	38.22
kW at -10°C/+40°C	31.27
kW at -20°C/+40°C	20.08
m3 / h	56
Remarks	Our capacity table is based on Manufacturer spec. We would like to know which refrigerant is in your system
Weight in kg.	212
Stock	1



Description

Used DWM D4DA1 2000 EWM

Used semi-hermetic compressor DWM - Copeland D4DA1-2000-EWM. For all the other specs (if available), see the picture of the manufacturer model plate or the attached pdf file. *Why choose for HOSBV? Were not only the largest used refrigeration specialist in Europe, but also, we deliver all equipment including an extensive test, warranty and industrial cleaning. *Optional we can also perform a new paint job and arrange the logistics.



Cooling capacity [kW]

$t_c \setminus t_e$	-25	-20	-15	-10	-5	0	5	10
30	18.18	22.97	28.58	35.13	42.76	51.58	61.72	73.31
35	16.90	21.54	26.94	33.22	40.51	48.93	58.61	69.68
40	15.59	20.08	25.27	31.27	38.22	46.24	55.45	65.99
45	-	18.60	23.56	29.28	35.89	43.50	52.24	62.25
50	-	17.10	21.84	27.27	33.52	40.72	48.99	58.45
55	-	-	20.10	25.23	31.13	37.91	45.69	54.61
60	-	-	18.34	23.18	28.71	35.06	42.36	50.73

Power input [kW]

$t_c \setminus t_e$	-25	-20	-15	-10	-5	0	5	10
30	6.97	7.67	8.30	8.83	9.21	9.42	9.43	9.20
35	7.37	8.18	8.93	9.59	10.13	10.51	10.70	10.66
40	7.75	8.66	9.53	10.32	11.00	11.54	11.91	12.07
45	-	9.11	10.08	11.00	11.82	12.52	13.06	13.42
50	-	9.52	10.60	11.64	12.60	13.45	14.16	14.70
55	-	-	11.07	12.23	13.32	14.32	15.20	15.92
60	-	-	11.51	12.78	14.00	15.14	16.18	17.07